



### Featured Highlights:

- Waterproof for outdoor use
- Machined Aluminum Construction
- Mounting Bracket and U bolt included
- DC Power will pass on all ports
- Low insertion Loss

Model #	Type	Insertion Loss
SP-2-0825	2 Way	3.4dB
SP-3-0825	3 Way	5.3dB
SP-4-0825	4 Way	6.5dB

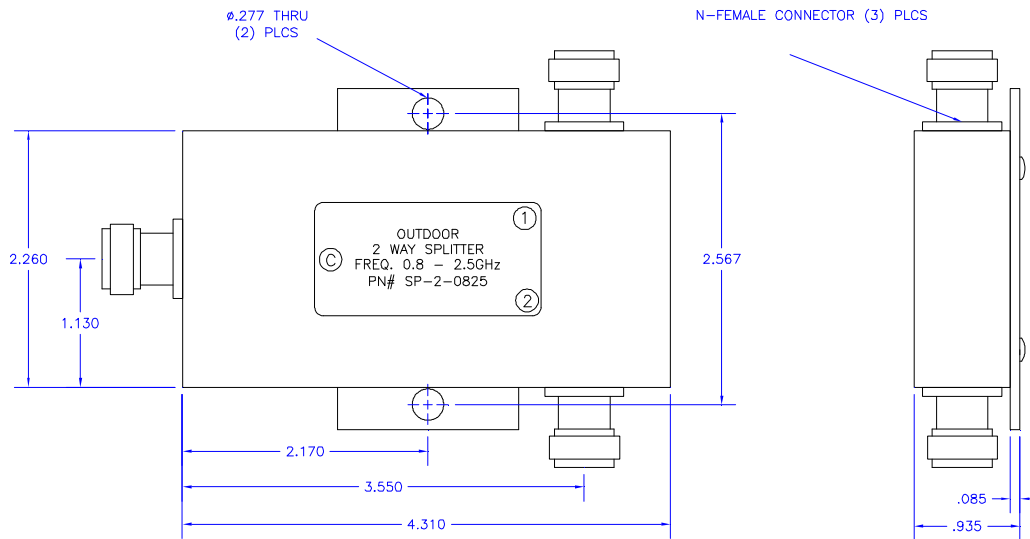
### Typical Performance Parameters

<b>Frequency:</b>	800 MHz to 2500 MHz
<b>Insertion Loss:</b>	< 0.5 dB over theoretical power division
<b>VSWR:</b>	< 1.5 : 1
<b>Power Handling:</b>	25 Watts
<b>Operational Temp:</b>	-40 to +85 Deg C
<b>RF Connectors:</b>	"N" Type Waterproof Female Connectors
<b>Weight:</b>	< 15 oz ( splitter only )
<b>Chassis:</b>	Machined Aluminum Housing, Painted Black
<b>DC:</b>	DC power will pass through on all ports

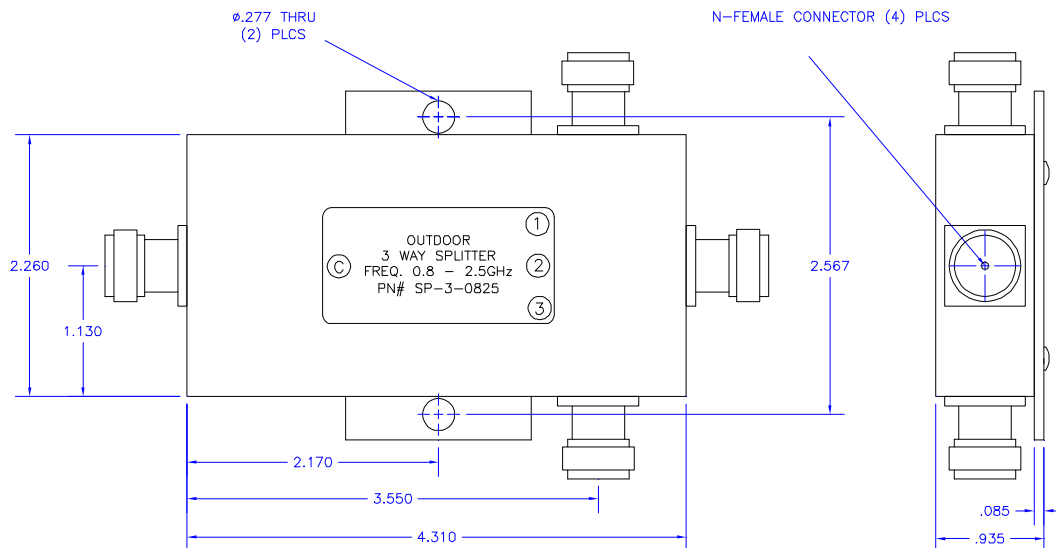
9017 Cincinnati Columbus Rd.  
West Chester, Ohio 45069  
PH: 513-777-2774

## Mechanical Outlines:

### PN# SP-2-0825

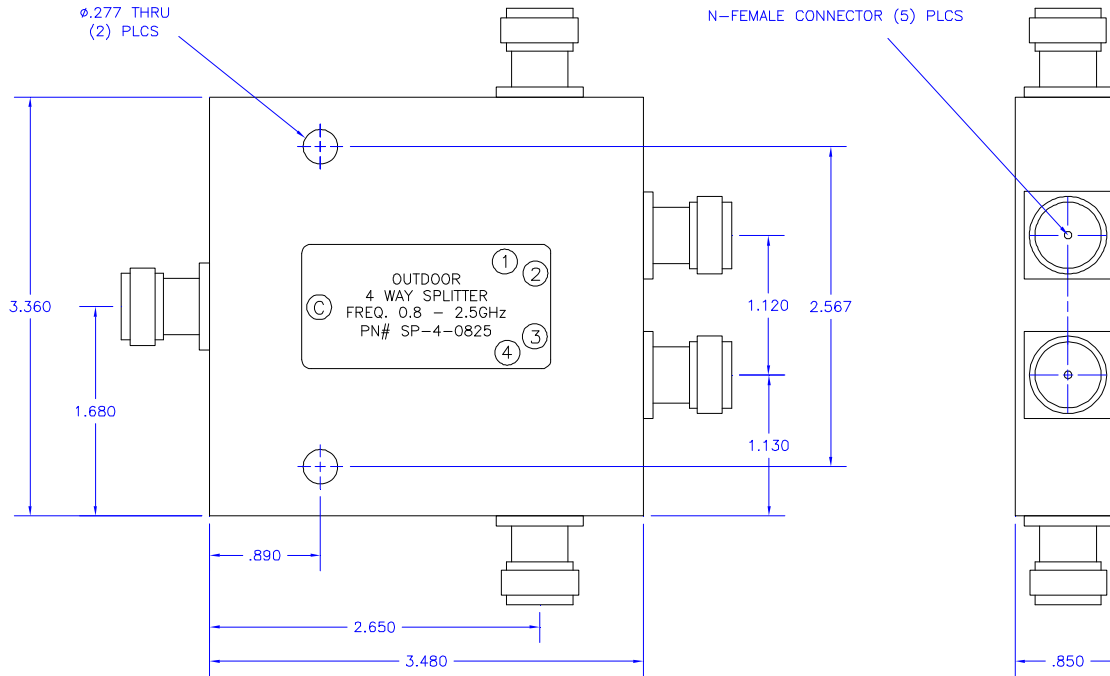


### PN# SP-3-0825



9017 Cincinnati Columbus Rd.  
West Chester, Ohio 45069  
PH: 513-777-2774

PN# SP-4-0825



9017 Cincinnati Columbus Rd.  
West Chester, Ohio 45069  
PH: 513-777-2774